

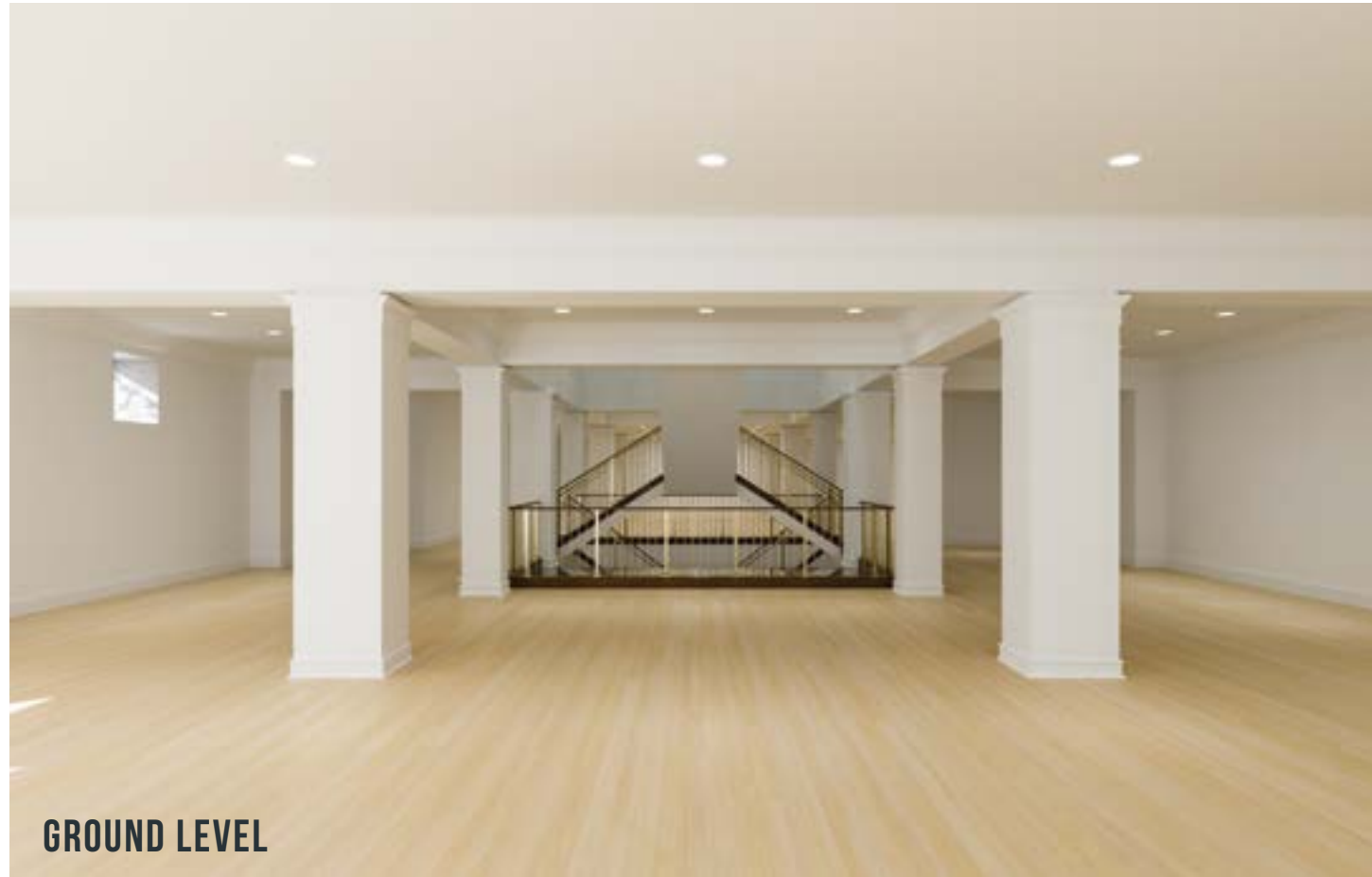


EastBanc

# 3077 M STREET, NW

---

› 20,000 SF AVAILABLE



**GROUND LEVEL**

## **GROUND FLOOR**

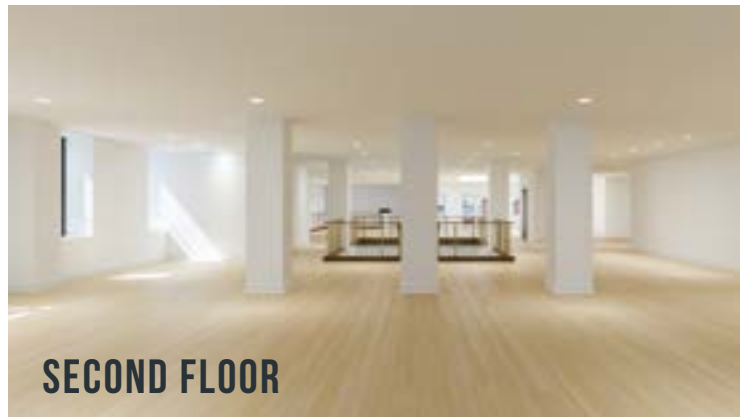
**6,850 SF**



**LOWER LEVEL**

## **SECOND FLOOR**

**5,953 SF**



**SECOND FLOOR**

## **LOWER LEVEL**

**7,365 SF**



# GEORGETOWN

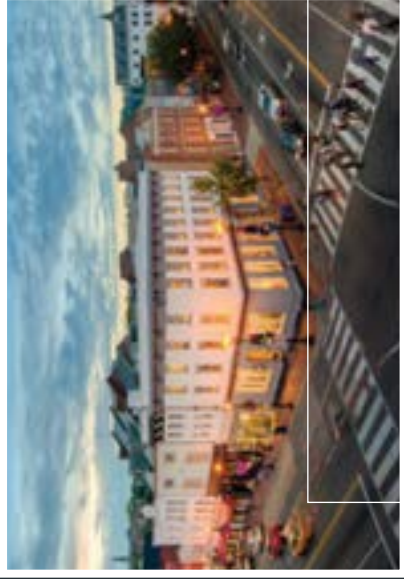
**\$126,000+**  
AVERAGE  
HOUSEHOLD  
INCOME

**750+**  
HOTEL ROOMS

**3.5 MILLION SF**  
OFFICE SPACE



**97**  
NEIGHBORHOOD  
WALKSCORE



**320,461**  
POPULATION



**70**  
HOME DECOR  
RETAILS AND DESIGN  
SHOWROOMS

## Neighboring Tenants

WISCONSIN AVENUE

WISCONSIN AVENUE

FOXTROT  
HOBO  
SEE OPTICAL  
AVAILABLE  
AVAILABLE  
KENDRA SCOTT  
RALPH LAUREN  
SLEEP NUMBER  
MADEWELL  
APPLE  
ZADIG & VOLTAIRE  
VINEYARD VINES  
AVAILABLE

**P**  
PNC BANK  
NEW BALANCE  
ALLBIRDS  
LEVIN BAKERY  
SPORTS & SOCIAL  
URBAN OUTFITTERS  
JAMES ALLEN  
AVAILABLE  
FRAME  
STATE AND LIBERTY

CAPITAL ONE  
GTOWN TOBACCO  
CHASE BANK  
BUCK MASON  
UBIQ  
ARCTERYX  
HAAGAN DAZS  
BODEGA  
AVAILABLE  
AVAILABLE  
DOC MARTEN  
L'OCCITANE  
PATAGONIA  
POTOMAC WINES

90 SECOND PIZZA  
PACERS  
BLUES ALLEY  
REREN  
MUNCHIEZ  
KHIN SUSH  
SOUTH MOON UNDER  
BAKERS DAUGHTER  
FREE PEOPLE  
MOVEMENT

ROSEWOOD HOTEL

N STREET

31<sup>ST</sup> STREET

AVAILABLE

US POST OFFICE  
AVAILABLE



**P**  
AVAILABLE  
RAG & BONE  
GLOSSIER  
RAG & BONE MEN  
BLUE MERCURY  
FARM RIO  
HISTORIC OLD STONE HOUSE  
JUNIOR LEAGUE  
REFORMATION  
GORJANA  
AVAILABLE  
THE PAPER SOURCE  
SPRINKLES CUPCAKE  
THE TOX  
FREE PEOPLE  
LE LABO  
MYKITA

RESIDENTAL

30<sup>ST</sup> STREET

M STREET

31<sup>ST</sup> STREET

CHRISTIANE SALON & SPA  
ROTHY'S  
CATBIRD  
LADUREE  
THUNDERBURGER  
BARNES & NOBLE

THE WING  
BAKED & WIRED

RESIDENTAL

THOMAS JEFFERSON

AVAILABLE  
INDOCHINO  
RAY-BANS  
UNITED BANK  
AVAILABLE/  
UNDER  
CONSTRUCTION

COREPOWER YOGA

RESIDENTAL

30<sup>ST</sup> STREET

GRAY - MANAGED BY EASTBANG

**INDOCHINO**

**patagonia**

**Reformation**



**EastBanc**

**3223 Prospect Street**  
Washington DC, 20007

[eastbanc.com](http://eastbanc.com)

**ASHLEY BINKOWSKI**  
(202) 737-1000  
[abinkowski@eastbanc.com](mailto:abinkowski@eastbanc.com)

**BARRY GREENBERG**  
(202) 737-1000  
[bgreenberg@eastbanc.com](mailto:bgreenberg@eastbanc.com)

to virtually tour please select **VIRTUAL TOUR**  
<http://vr.space-collectors.com/eastbanc/3077/>

to video tour please select **VIDEO TOUR**  
<https://eastbanc.com/estates/object?id=5>