

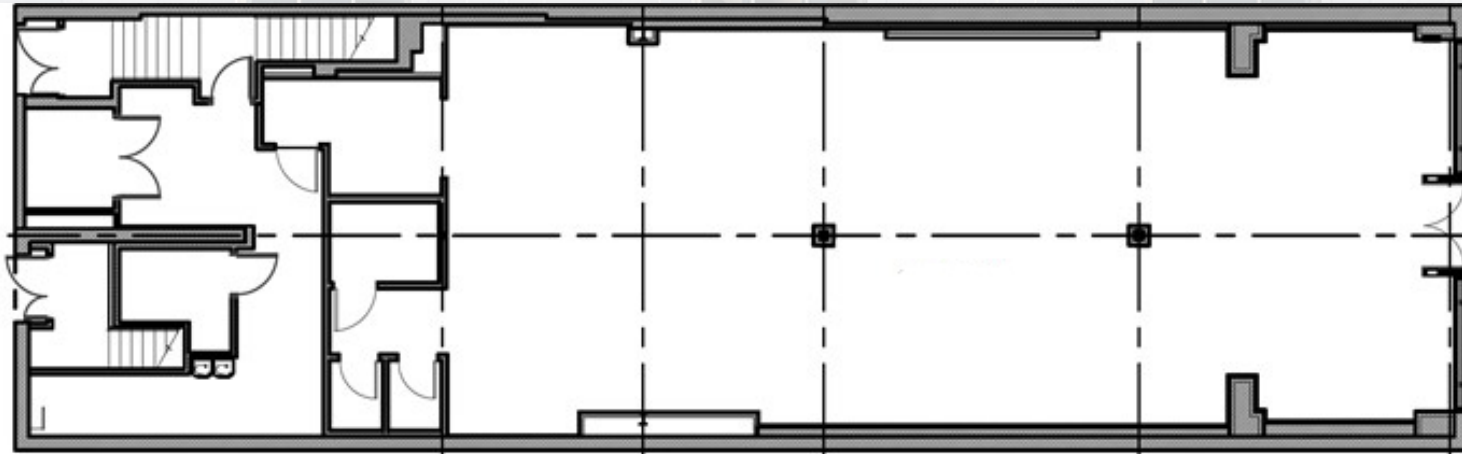
EastBanc

3259 M STREET

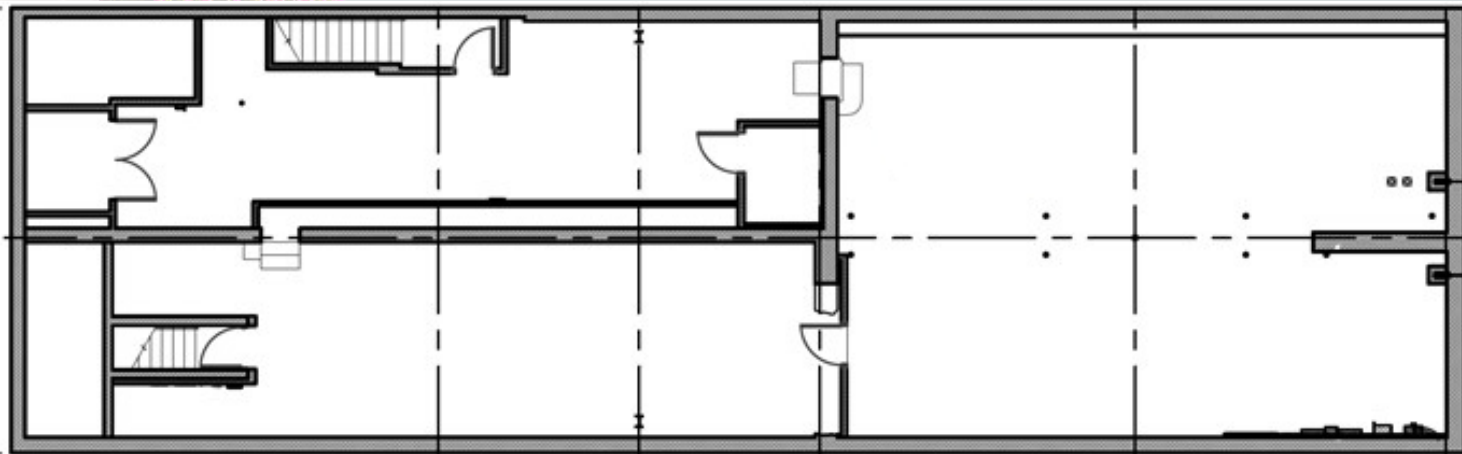


REMARKABLE GEORGETOWN OPPORTUNITY WITH **M STREET** FRONTAGE

FLOOR PLAN



**Ground
Floor**
3,630 SF



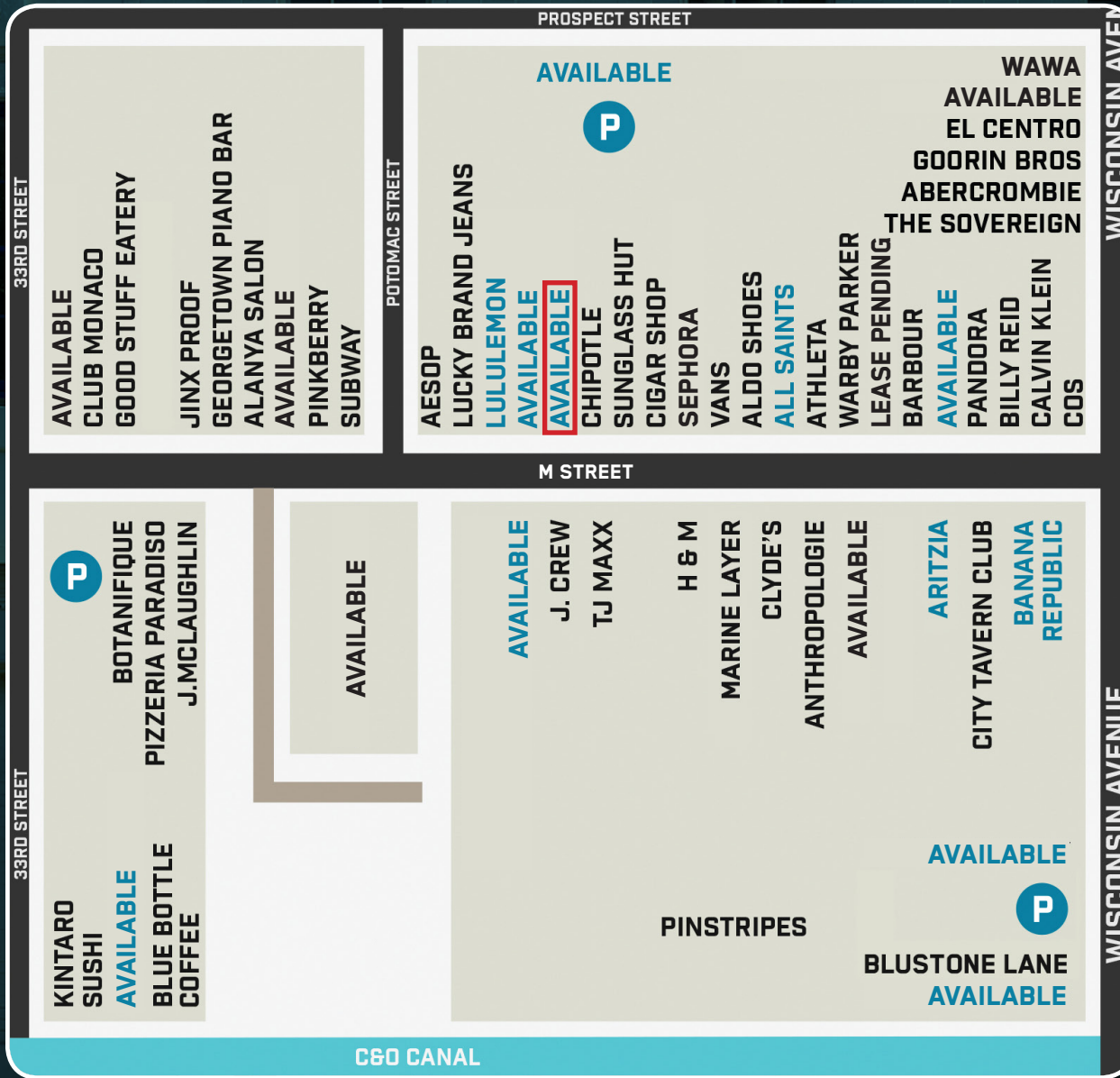
**Total
available**
7,260 SF

Cellar
3,630 SF

le for
Journeys



NEIGHBORING TENANTS



 **lululemon**

J. McLaughlin

SEPHORA

ARITZIA

BILLY REID

BARRY GREENBERG
 (202) 737-1000
 bgreenberg@eastbanc.com

3307 M Street, NW
 Washington, DC 20007
 eastbanc.com

ASHLEY BINKOWSKI
 (202) 737-1000
 abinkowski@eastbanc.com